

WHEELCHAIR PROVISION

**OCCUPATIONAL THERAPIST &
PHYSIOTHERAPY DEPARTMENT**

**NATIONAL SPINAL INJURY CENTRE
STOKE MANDEVILLE HOSPITAL
APRIL 2020**

CONTENTS

Wheelchairs

Cushions

Seating provision

- at the NSIC
- by your wheelchair service

Posture and seating clinic

Examples



WHAT ARE YOU SITTING ON?

Folding or Rigid? Manual or Powered?



WHAT ARE YOU SITTING ON?

Cushion type: foam, gel or air?



PROCEDURE FOR INITIAL SEATING PROVISION

When you are able to mobilise, you will be allocated a loan hospital wheelchair while in rehabilitation at the NSIC:

- A referral is made to your local wheelchair service on your behalf
- Seating clinic assessment is arranged (approx. 4 weeks post mobilisation)
- You will be allocated a “Lead therapist” who acts as advocate, OT/PT

Assessment:

Individuals have specific needs and requirements for their wheelchair and cushion – including comfort, skin, posture, ability to transfer, level of SCI

The seating clinic assessment will provide a baseline record of posture, skin, ideas for cushions and wheelchair to try.

Equipment to be tried needs to be done in conjunction with the wheelchair service and what they have said they'll be prepared to offer.

Lead therapist will be in regular contact with wheelchair service, explain seating needs and make sure that wheelchair is available for discharge date

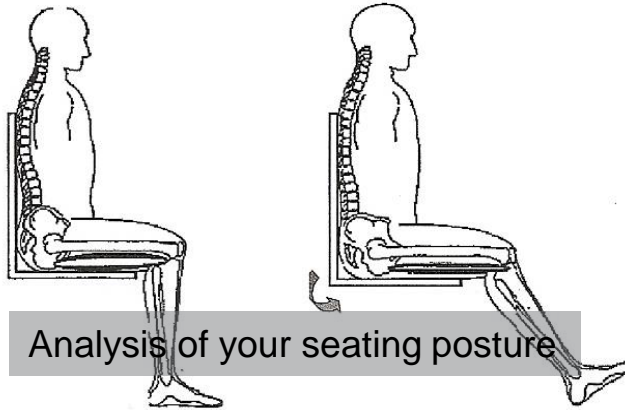


A reminder

- A Wheelchair can take 6 - 8 weeks to arrive, once ordered
- Equipment (permanent or interim) is required for discharge from hospital
- Keep a record of your wheelchair service contact details

POSTURE AND SEATING CLINIC - ASSESSMENT

Posture



Analysis of your seating posture

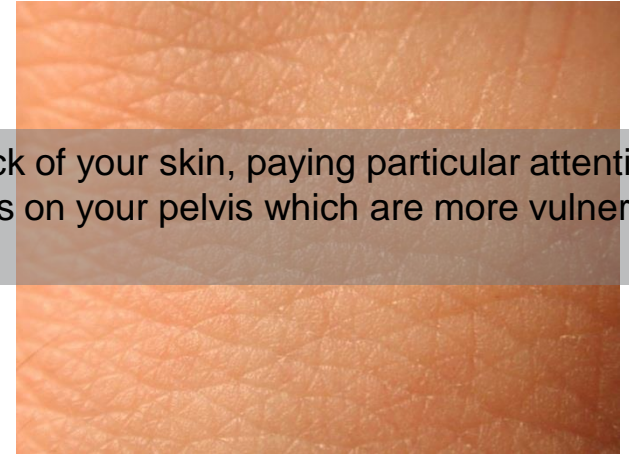
Cushions



Trial of any alternative cushions recommended by your therapy team

Skin

A visual check of your skin, paying particular attention to bony areas on your pelvis which are more vulnerable to pressure



Pressure mapping



Pressure mapping of your current wheelchair cushion

ASSESSMENT EQUIPMENT

- Lightweight manual wheelchairs - 1 week trial.
- Powered wheelchairs - use in hospital + grounds only.
- Cushions - check skin when trying out different cushions
- Limited range of equipment to try

Cushion selection will depend on your need for pressure relief and postural support.

Cushions & wheelchairs provided by your local wheelchair service will be trialled to make an informed decision around long term provision.

If feasible, a rep can carry out a wheelchair specification prescription with your therapist to enable a wheelchair to be ordered to meet your needs ahead of discharge.



LIGHTWEIGHT WHEELCHAIR CLINIC

- This is held in physiotherapy gym
- Approx once every 2 months
- Book through your physiotherapist
- Range of manual wheelchairs demonstrated and critiqued

A wheelchair is akin to a pair of glasses - one size does **not** fit everyone.

Wheelchair choice is dependent on your clinical needs, level of injury, method of transfer, home environment, lifestyle etc.

POWERED WHEELCHAIRS

- Maintained in OT department
- Range of wheelchairs available for trial
- Manual wheelchair retained as a backup
- Wheelchair service will often request home assessment
- A powered wheelchair may not be issued until after discharge



ROLE OF A WHEELCHAIR SERVICE

- Responsible for both wheelchair & cushion provision for discharge
- 1st point of call post discharge
- Follow up assessments if required
- Re-assess after 5 years
- Responsible for maintenance of all equipment provided by them
- Re-provision of equipment

The Lead therapist will be a link to your wheelchair service therapist and advocate on your behalf regarding your wheelchair and cushion needs.

Wheelchair services differ in their standard operating procedures and budgets.

OPTIONS AVAILABLE

It may be useful to have an initial (interim) wheelchair and then arrange to be reassessed by the wheelchair service in a year:

- Research has shown that most people change their wheelchair within the first year.
- Once they are home and in their own environment, their ideas change as to what they need from a wheelchair. The hospital environment is not an accurate setting to decide what you really may need from a wheelchair
- If a powered wheelchair user – you will need a basic manual wheelchair as a backup
- EPIOC - powered wheelchair with back up manual WC

Funding your wheelchair

Reviewed as clinical needs change

Partnership option

- % cost of wheelchair but wheelchair service carries out repairs + maintenance

Independent option

- private purchase with responsibility for repairs + maintenance
- additional money but this needs to cover maintenance of wheelchair

Options available if returning to work

“Motability” scheme

Aspire “Human Needs fund” - % contribution

Access to work – government scheme to provide wheelchair for use at work



REVIEW OF EQUIPMENT AFTER DISCHARGE

Wheelchair service – 1st contact

Telephone advice through Spinal Outpatient dept (01296-315829)

Therapist in Spinal outpatients

Out-patient Seating clinic appointment

Your local wheelchair service are responsible for all repair and maintenance issues if they have provided you with a wheelchair.

Not all wheelchairs offer pressure mapping and if you experience skin breakdown or a change in postural needs, it is possible to have an out-patient appointment with a seating therapist at the NSIC.

This can be booked through spinal out-patients.

MAINTENANCE OF EQUIPMENT

Cleaning

- Canvas and casters
- Remove hair caught in casters

Check Tyre pressure

- Low pressure can result in poor shock absorption and agility, caused by low resistance generated by the tyre
- High pressure can cause bursts and tears (check side of tyre for PSI)
- Solid tyres – easier to maintain but have increased rolling resistance.

Check Brakes

COST OF EQUIPMENT (PRIVATE)

Approximate NHS base price – accessories add to the price and VAT may need to be added

Manual

■ Action 4	£ 600
■ Quickie Life R	£1,200
■ Quickie Argon 2	£1,800
■ Quickie Helium (rigid)	£2,725
■ Kuchall K(rigid)	£2,500

Powered

■ Spectra XTR2	£4,500
■ TDX SP	£5,500
■ E-motion wheels M25	£5,700

CUSHIONS

Cost of cushions

■ Foam cushion e.g. lowzone	£80
■ Varilite cushion +cover	£380
■ Jay 2	£550
■ Vicair	£520-600
■ Roho	£500-560

Lifespan of cushions

- Foam cushion - 1 year
- Gel cushions - 3 years
- Air cushions – puncture risk
- Monitor skin



RAIL TRAVEL.....

- Increasing number of trains have wheelchair accessible toilets but not all, so you need to ask at the time of booking
- Some trains have wheelchair spaces and these can be reserved with 24 hours' notice
- Wide wheelchairs – check that width can be accommodated



COYOTE – MANUAL CLIP ON HANDCYCLE



Quick release through docking system

- 11 gears
- V brakes

Prices from £2,395

www.teamhybrid.co.uk

VIPER POWER CYCLES



Quick release for rigid wheelchairs

- Weight 3.7kg
- Range 18km
- Speed 16 km/hr

Prices from £3,995

www.teamhybrid.co.uk

COUGAR HYBRID



Clip on electric assist handcycle

- 480W motor
- Range 17-20km
- 11 gears
- Thumb throttle operated

Prices from £4,395

www.teamhybrid.co.uk

Copyright of NSIC Stoke Mandeville Hospital

BATEC

- Attachment designed for easy mounting
- Different versions available according to level of injury

Models	Manual	Manual Handcycle
	Electric	Electric Bike
	Hybrid	Combination
	Urban	14 km/hr 280W motor
	Mini	16" wheels- compact for travel
	Rapid	30km/hr
	Scrambler	28km/hr, 1300W motor



Electric



Manual



Hybrid

Prices from £2,495 to £5,995

www.cyclonemobility.com

Standing Wheelchairs



Levo C3 Stand
up wheelchair
& Levo LAE

Available in
manual and
powered
options



Prices from £5,560 to £13,350

www.Gerald-Simmonds.co.uk

Copyright of NSIC Stoke Mandeville Hospital

ROUGH TERRAIN OPTIONS



AXESS

Designed for hill riding & touring

- 2 speed
- Handlebar twist action throttle

Also available

IBEX non-electric for downhill racing

HANDS designed for ski-slopes



WATTS

Prices from £12,995

www.cyclonemobility.com

FREEWHEEL



Lifts the front castors off the ground, facilitating access on grass, kerbs, and rough roads

Price from £400

www.gerald-simmons.co.uk

FRONTWHEEL



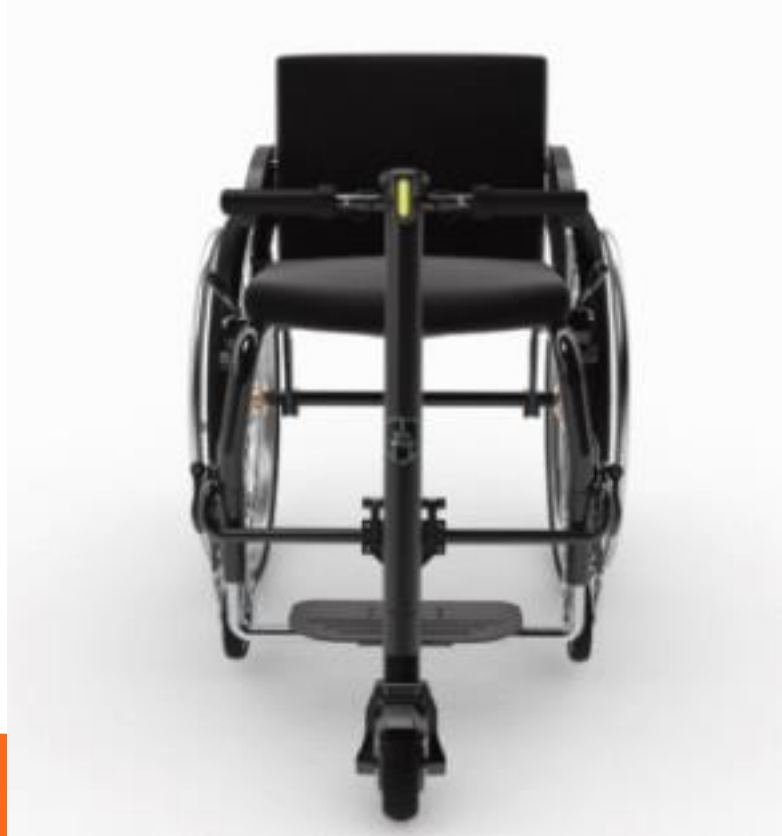
The frontwheel fits both RGK and non RGK wheelchairs with a plate adaption, allowing rough terrain when wheeling forwards or backwards.

- Locks in place when not in use

Price from £500

www.bettermobility.co.uk

UNA WHEEL MINI



Attaches to a manual wheelchair, lifting up the front casters.

- Range 15 km
- Weight 5.3kg
- Speed 6-16 km/hr
- 250W motor

Price from £2,250

www.gerald-simmons.co.uk

E FIX



E35 & E 36 OPTIONS

- ADD ON POWER TO A MANUAL WHEELCHAIR
- SPEED OF 0.6- 6 KM/HR.
- WEIGHT 2 KG

Price from £5,300

www.gerald-simmons.co.uk

E MOTION WHEELS M25



Power assist

- Additional features such as: roll back, cruise control and altering sensitivity for each wheel.
- Range 24 km

Price from £5,700

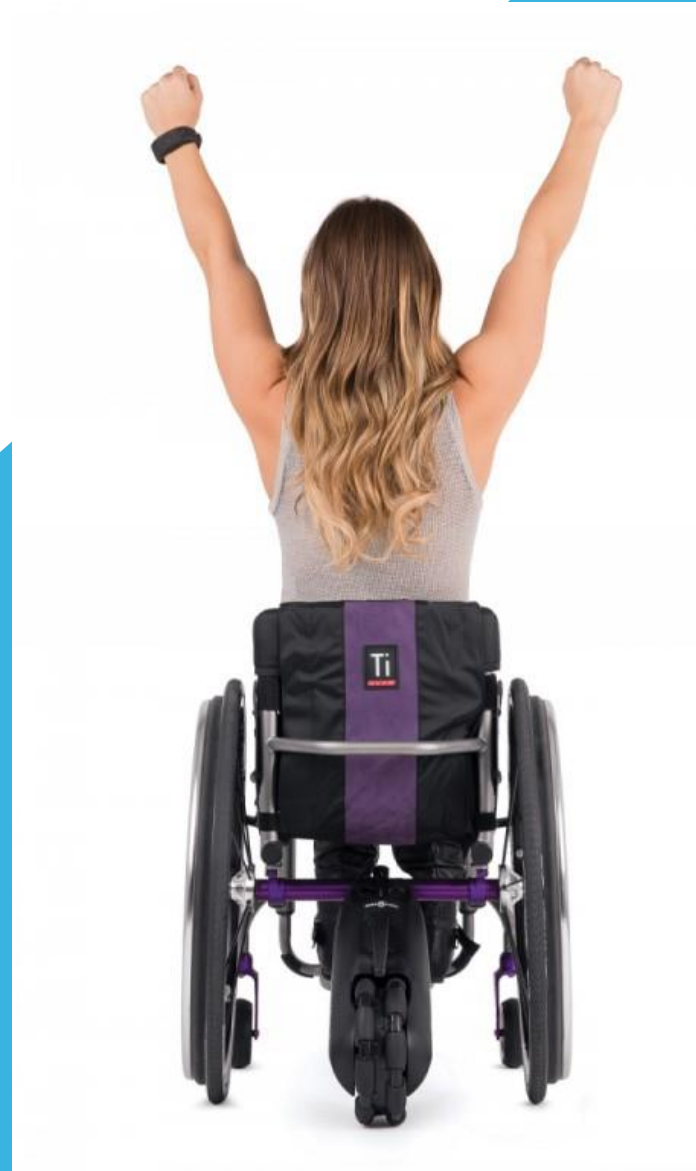
www.gerald-simmons.co.uk

Smartdrive

Attaches to most rigid and folding manual wheelchairs to provide power assist.

- Detachable
- Activated by a hand tap.
- Battery range 14 miles
- 250w motor
- 5.4kg

Price from £4,795



www.gerald-simmons.co.uk

Accessories

Black Box
£35



Phone Charger
£65



www.gerald-simmons.co.uk

TREKINETIC K2 & GTE



- Tilt in space feature for descending
- Designed for snow, sand, mud & gravel
- 5 speed option for power on GTE
- K2 15kg
- GTE 34 kg

Price from £3,895 (manual) & £9,795 (power)

www.trekinetic.com

BOMA 7



- Range 15 miles
- Handlebar & joystick options
- Standard seat base 17" x 17"

Price from £12,700

www.magicmobility.co.uk